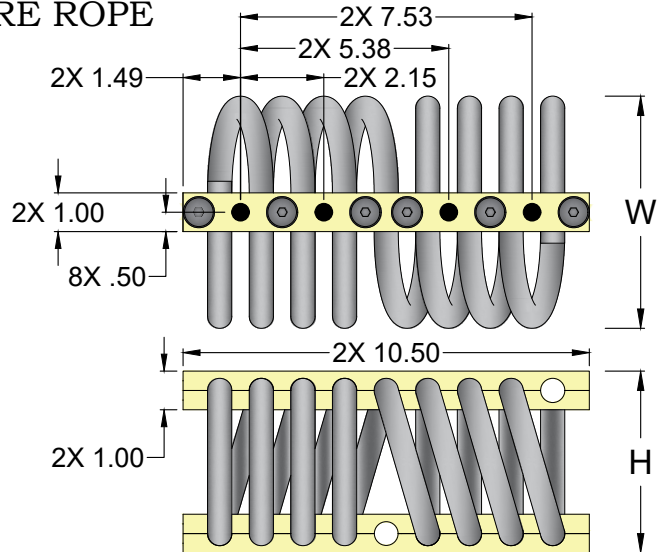
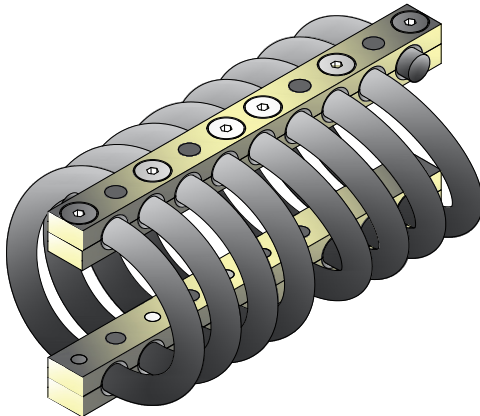


# CB1500 SERIES

## 5/8" WIRE ROPE



### NOTES

1. ALL DIMENSIONS ARE IN INCHES. INTERPRET PER ANSI Y14
2. ALL DIMENSIONS ARE NOMINAL AND FOR REFERENCE ONLY

ISOLATOR PART NO.	NOMINAL H (in)	NOMINAL W (in)	LOAD MODE	SHOCK AVERAGE K (lb/in)	VIBRATION AVERAGE K (lb/in)	MAX. RATED DYNAMIC TRAVEL (lb/in)
CB1500-10-[ ]	3.50	3.50	COMPRESSION	6200	13800	1.20
			SHEAR/ROLL	3360	4350	1.20
			45 DEG. C/R	3930	10000	1.50
CB1500-12-[ ]	3.50	4.00	COMPRESSION	5375	12625	1.20
			SHEAR/ROLL	2735	2950	1.20
			45 DEG. C/R	3290	9100	1.80
CB1500-15-[ ]	3.90	4.40	COMPRESSION	3655	8095	1.40
			SHEAR/ROLL	1870	2100	1.40
			45 DEG. C/R	2265	5525	2.20
CB1500-17-[ ]	3.90	4.90	COMPRESSION	3200	7200	1.40
			SHEAR/ROLL	1550	1850	1.40
			45 DEG. C/R	2050	5150	2.40
CB1500-20-[ ]	4.30	5.30	COMPRESSION	2585	5525	1.80
			SHEAR/ROLL	1250	1350	1.80
			45 DEG. C/R	1595	3775	2.80
CB1500-25-[ ]	4.70	5.50	COMPRESSION	1850	4100	2.20
			SHEAR/ROLL	1000	1150	2.20
			45 DEG. C/R	1200	2750	3.00
CB1500-30-[ ]	4.70	6.00	COMPRESSION	1610	3425	2.20
			SHEAR/ROLL	800	1060	2.20
			45 DEG. C/R	995	2425	3.20
CB1500-40-[ ]	5.00	6.50	COMPRESSION	1155	2450	2.40
			SHEAR/ROLL	560	750	2.40
			45 DEG. C/R	620	1675	3.60
CB1500-50-[ ]	5.30	7.00	COMPRESSION	795	1700	3.20
			SHEAR/ROLL	410	550	3.20
			45 DEG. C/R	440	1275	4.40
CB1500-60-[ ]	5.60	7.50	COMPRESSION	700	1240	3.40
			SHEAR/ROLL	380	390	3.40
			45 DEG. C/R	400	1000	4.60
CB1500-70-[ ]	6.00	8.00	COMPRESSION	650	1140	3.70
			SHEAR/ROLL	330	350	4.00
			45 DEG. C/R	265	870	5.00



JOB NAME:

CUSTOMER :

CUSTOMER P.O.:

SALES ORDER:

### MODEL CB1500 SERIES WIRE ROPE ISOLATOR



**VMC GROUP**  
CONTROLLED ENVIRONMENT SOLUTIONS®

Bloomington, NJ Houston, TX Corona, CA Wind Gap, PA

DRAWING NO.:

REVISION:

SHEET:

SCALE :

1 OF 2

NONE

CB [ ] 1500 [ ] - 30 [ ] - C2

MOUNTING HOLE OPTIONS

# OF COILS (BLANK = 8 COILS)

FAMILY SERIES SIZE (-10 THRU -70)

SPECIAL REQUIREMENTS (D\*, R, F, J\*\*)

FAMILY SERIES

WIRE ROPE REQUIREMENTS

BLANK = 302 STAINLESS STEEL (STANDARD), OR G, OR S

# OF COILS (PATTERN OR PROFILE TO MATCH)

FAMILY NAME

**SPECIAL REQUIREMENTS**

<b>D</b>	DFARS*
<b>F</b>	THREAD FREE CABLE
<b>G</b>	GALVANIZED CABLE
<b>J</b>	ALT STYLE CONSTRUCTION**
<b>M</b>	METRIC INSERTS
<b>R</b>	RoHS
<b>S</b>	STAINLESS STEEL TOTAL

\* DFARS COMPLIANT RAW MATERIAL COMES FROM A LIMITED GROUP OF APPROVED SUPPLIERS AND IS NOT REQUIRED ON STANDARD PARTS.

\*\* SUBJECT TO MANUFACTURER'S DISCRETION. CONTACT VMC FOR APPLICABILITY.

**FEATURES & BENEFITS:**

- WIDE RANGE OF AVAILABLE SIZES PERMITS ATTACHMENT TO ALMOST ANY MACHINERY OR ENCLOSURE REGARDLESS OF WEIGHT.
- COMPACT, LOW-PROFILE DESIGN AND THE ABILITY TO ATTENUATE HEAVY SHOCK LOADS WITH MINIMUM DEFLECTION ALLOWS USE WHERE SPACE IS AT A PREMIUM.
- THREE-PLANE, ALL-AXIS ISOLATION MEANS THAT EQUIPMENT IS FREE TO MOVE IN ANY DIRECTION - VERTICALLY, HORIZONTALLY, AND Laterally.
- CUSTOM WINDING, LOOP COUNT AND MOUNTING FEATURES ARE AVAILABLE TO MEET SPECIFIC REQUIREMENTS.
- OPERATING TEMPERATURE RANGE -400F TO +700F.

**STANDARD MATERIALS / FINISHES:**

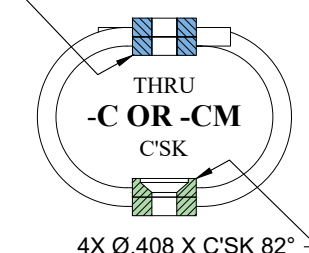
- **WIRE ROPE MATERIALS:** SERIES 302 STAINLESS STEEL.
- **BAR MATERIALS:** ALUMINUM ALLOY 6061-T6, -T6510, OR -T6511 PER SAE AMS4113, SAE AMS4150, OR ASTM B221 WITH CHEMICAL CONVERSION COATING PER MIL-DTL-5541, CLASS 1A.

**SPECIAL OPTIONS:**

- **WIRE ROPE MATERIALS:** GALVANIZED, IMPROVED PLOW WIRE, PLASTIC FILLED VALLEY WIRE, INCONEL 600, STAINLESS STEEL TYPE 316, STAINLESS STEEL TYPE 305.
- **BAR MATERIALS:** STAINLESS STEEL, CRES TYPE 302, 303, 304, OR 304L WITH FINISH PASSIVATED PER QQ-P-35C TYPE II.
- **MOUNTING CONFIGURATIONS:** INSERTS, THREAD TYPES, CLEARANCE HOLES.
- CONTACT VMC FOR OTHER MATERIAL AVAILABILITIES.

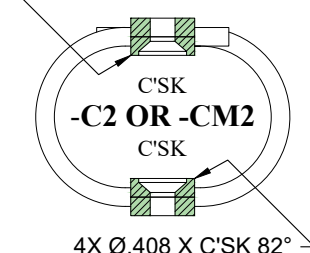
**MOUNTING HOLE OPTIONS:****M = METRIC** M C'SK = Ø.408 X 90° M INSERT = M10 X 1.5

4X Ø.455 THRU HOLE



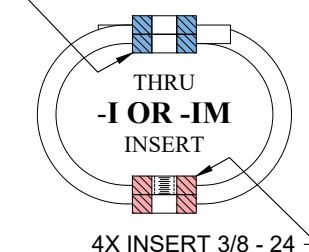
4X Ø.408 X C'SK 82°

4X Ø.408 X C'SK 82°



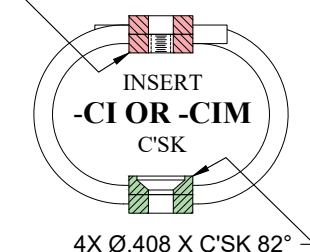
4X Ø.408 X C'SK 82°

4X Ø.455 THRU HOLE



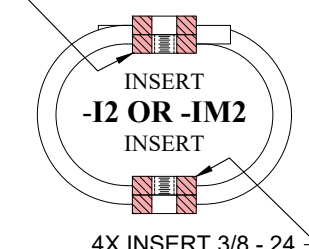
4X INSERT 3/8 - 24

4X INSERT 3/8 - 24



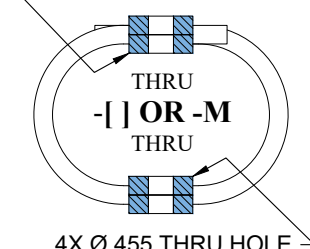
4X Ø.408 X C'SK 82°

4X INSERT 3/8 - 24



4X INSERT 3/8 - 24

4X Ø.455 THRU HOLE



4X Ø.455 THRU HOLE



JOB NAME:

CUSTOMER :

CUSTOMER P.O.:

SALES ORDER:

MODEL CB1500 SERIES  
WIRE ROPE ISOLATOR



**VMC GROUP**  
CONTROLLED ENVIRONMENT SOLUTIONS™

Bloomington, NJ Houston, TX Corona, CA Wind Gap, PA

DRAWING NO.:

REVISION:

SHEET:

SCALE :

2 OF 2 NONE